

Measuring Labor Market Power Two Ways[†]

By JOSÉ AZAR, IOANA MARINESCU, AND MARSHALL STEINBAUM*

A growing literature on employer power in labor markets provides evidence for widespread monopsony (e.g., Webber 2015; Dube et al. forthcoming). Much of this literature uses the elasticity of labor supply to the individual firm as a key proxy for monopsony; an elasticity that is well below infinity is a sign that employers have wage-setting power (Manning 2011) and can pay workers less than their marginal productivity. More recently, a flurry of studies has shown a negative relationship between wages and labor market concentration of employers (Rinz 2018; Benmelech, Bergman, and Kim 2018; Azar, Marinescu, and Steinbaum 2017; Lipsius 2018). The labor supply elasticity and labor market concentration are both measures of labor market power, but how are they empirically related?

In this paper, we estimate a proxy for the elasticity of labor supply and investigate the relationship between this proxy and labor market concentration. We use data from the popular job posting website CareerBuilder.com to estimate firm-level wage-setting power based on the elasticity of job applications in response to variation in the posted wage. In order to deal with the endogeneity of wages, we instrument for local variation in posted wages with posted wages from the same firm in other occupations and other commuting zones. The elasticity we estimate is 0.42, a fairly low value.

We then relate our estimated application elasticities to labor market concentration, the

Herfindahl-Hirschman Index based on vacancy shares. We find that, across commuting zone by six-digit standard occupational classification (SOC-6) occupation markets, the application elasticity to the firm is negatively correlated with labor market concentration. Furthermore, markets with higher concentration or lower application elasticity tend to have significantly lower wages. These findings are robust to using only within commuting zone variation across occupations, and are consistent with a theoretical framework where concentration and the labor supply elasticity are both measures of the gap between wages and productivity (Boal and Ransom 1997). Overall, our findings suggest that higher concentration and lower application elasticity both contribute to explaining wage suppression.

We expect the application elasticity to be higher in more densely populated areas; an abundance of both jobs and workers makes these labor markets closer to the ideal of perfect competition. To test this idea, we estimate the application elasticity as a function of the population density in a commuting zone. While the application elasticity is higher in denser commuting zones, it is still below five, which departs from perfect competition (Naidu, Posner, and Weyl 2018). This implies that even though labor market concentration is low in the most populous areas (Azar et al. 2018), the application elasticity is also low, consistent with a non-negligible degree of monopsony power.

These findings speak to two questions that have arisen in response to the research on employer power in labor markets. First, they are consistent with employer concentration being a measure of the power of employers to pay workers less than their marginal productivity. Second, they show that while employers exercise significant market power in labor markets in general, their market power does vary meaningfully with concentration. Given that concentration is a key measure for antitrust enforcement (US Department of Justice and Federal Trade Commission 2010), these findings imply that

*Azar: IESE Business School, Avinguda Pearson, 21, 08034 Barcelona, Spain (email: jazar@iese.edu); Marinescu: University of Pennsylvania School of Social Policy & Practice, 3701 Locust Walk, Philadelphia, PA 19104, and NBER (email: ioma@upenn.edu); Steinbaum: Roosevelt Institute, Washington, DC (email: msteinbaum@gmail.com). Financial support for Azar from Secretaria d'Universitats i Recerca, Generalitat de Catalunya (Ref.2016 BP00358).

[†]Go to <https://doi.org/10.1257/pandp.20191068> to visit the article page for additional materials and author disclosure statement(s).

antitrust policy is a promising, if not the only, policy tool available for mitigating the monopsony power of employers.

I. Theoretical Framework

Theory predicts that labor market concentration and the labor supply elasticity should be negatively correlated, and that wages should be higher when concentration is lower and when the labor supply elasticity is higher. Assume that firms play an employment setting game under the Cournot model (for a more detailed development, see Boal and Ransom 1997). The market wage w increases with the total employment level L in the market: $w(L)$. A firm chooses the level of employment to maximize profits, anticipating that higher employment leads to a higher wage for the whole market, including itself. In this model, if there are many firms, the impact of a firm's increased employment on market wages is minimal because wages are already high and close to the marginal revenue product of labor. If there are few firms, one firm's increased demand for labor increases market-level employment and wages, so equilibrium employment and wages are suppressed relative to the competitive equilibrium where wages are set equal to the marginal revenue product of labor.

The first-order condition for the firm's profit maximization gives a firm-specific rate of exploitation E_i :

$$(1) \quad E_i = \frac{MRP_i - w}{w} = \frac{L_i}{L} \varepsilon^{-1},$$

where MRP_i is the marginal revenue product of labor in firm i and ε is the exogenously given market level elasticity of labor supply (i.e., the additional employment that would accrue to firms in this market if the market wage were marginally raised). Let E be the employment-weighted average rate of exploitation (or wage markdown). We then have

$$(2) \quad E = \sum_{i=1}^n E_i \frac{L_i}{L} = \varepsilon^{-1} HHI \Leftrightarrow HHI = \varepsilon E,$$

where HHI is the Herfindahl-Hirshman Index for employment.

It can be shown that E is also equal to the average (weighted by market shares) *inverse* firm-level elasticity: theory therefore implies

that the average firm-level elasticity in a market should be negatively correlated with the HHI. Furthermore, we expect that, for a given marginal revenue product of labor, wages are lower (E is higher) when HHI is higher or when the average inverse firm-level elasticity is lower.

II. Empirical Methods and Results

The data we use for this paper are online job postings from CareerBuilder.com, which accounts for approximately a third of all online job postings (Marinescu and Wolthoff 2016; Azar, Marinescu, and Steinbaum 2017). For each job posting, we observe its duration, the number of applications received, the employer and its location, the Standard Occupational Classification, and the job title. Approximately 20 percent of the vacancies post wages.

Using this data, we measure a proxy for the labor supply elasticity to the individual firm: the elasticity of applications with respect to the posted wage. Given the theory, we expect this elasticity of applications to be negatively correlated with the HHI. Furthermore, the inverse of the application elasticity is a proxy for the market-level rate of exploitation, as defined in equation (2). Therefore, all other things equal, wages should decrease with HHI and increase with the weighted elasticity of applications.

We start by estimating the following equation in order to recover application elasticities at the firm level:

$$(3) \quad y_{ijmt} = w_{ijmt} \sum_{n=0}^3 \beta_n d_m^n + \gamma \cdot x_{ijmt} + \varepsilon_{ijmt},$$

where y_{ijmt} is the log of the total number of applications to jobs by firm i with job title j in market m in year-quarter t and w_{ijmt} is the corresponding log average wage. In line with theory, observations are weighted by each firm's vacancy share at the CZ by SOC-6 by quarter, which is the level at which the HHI is computed. The β_n coefficients estimate the firm-level application elasticity as a function of population density, allowing for a third order polynomial. The vector x_{ijmt} is a set of controls, which in the baseline specification includes the log of the total number of vacancy-days that the firm posted for that job title in that market and year-quarter, year-quarter fixed effects, and CZ \times SOC \times job

title fixed effects. It is important to control for job title fixed effects as failing to do so would typically yield a negative application elasticity (Marinescu and Wolthoff 2016).

Since the log wage is an endogenous variable, we instrument it using the average log wage for the same firm in other CZ \times SOC-6 markets (in the spirit of Hausman, Leonard, and Zona 1994). This average excludes wages in the same CZ for other SOC-6s, or wages for the same SOC-6 in other CZs. Wages posted in other labor markets might be a good instrument because of firm-level wage-setting policies that hold across the labor markets out of which a given firm hires (Card et al. 2016). Local job-posting and wages may be jointly determined by local labor supply and demand conditions, but national firm-level wage-setting in the excluded markets is unlikely to be caused by an omitted variable at the market level and can hence be used to trace out the application elasticity.

To allow for elasticities that vary more flexibly than just as a function of CZ population density, we estimate separate regressions for each CZ \times SOC-6 market. We do this in two steps, which are equivalent to interacting the wage with a CZ \times six-digit SOC dummy variable for each market and using the instrument for the wage (also interacted with dummy variables for each market). In the first step, we run three regressions using data for all markets and controlling for log days posted, CZ \times six-digit SOC \times job title fixed effects, and year-quarter fixed effects: the left-hand-side variables are log applications, log wage, and the instrument. For each of these three regressions, we obtain residuals. In the second step, we run, separately for each CZ \times SOC-6, a simple regression of residualized log applications on residualized log wage, instrumented by residualized average log wage for the same firm in other CZs and other SOC-6s. This gives us an estimate of the applications elasticity for each CZ \times SOC-6.

Figure 1 depicts the relationship between firm-level application elasticities and population density as estimated in equation (3). In commuting zones between the twentieth and the eightieth percentile of population density (weighted by employment levels), the application elasticity is not significantly different from zero; in markets below the twentieth percentile of population density, the elasticity appears to be negative, for reasons that are yet to be investigated. Overall,

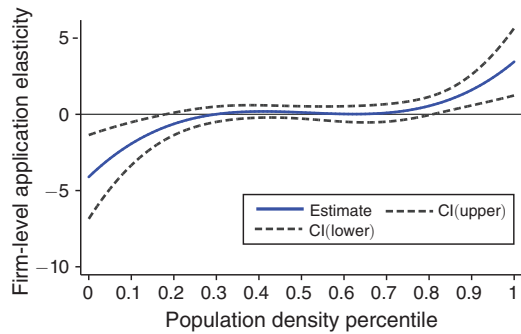


FIGURE 1. FIRM-LEVEL APPLICATION ELASTICITY AS A FUNCTION OF COMMUTING ZONE POPULATION DENSITY

Notes: Estimated effect from a panel IV regression of log EOI (expression of interest) on the log real wage interacted with a third order polynomial in log population density. The wage is instrumented with the average log real wage in other commuting zones and other SOC-6s for the same firm interacted with a third order polynomial in log population density. We control for log days posted, CZ \times six-digit SOC \times job title fixed effects and year-quarter fixed effects. Data are for the period 2010:I–2013:IV. We cluster standard errors at the CZ \times six-digit SOC level.

the results are consistent with 80 percent of workers working in markets with substantial monopsony power. Above the eightieth percentile of the population density, the application elasticity increases with population density, reaching about four for the most densely populated areas. Even the most densely populated areas have nowhere near an infinite elasticity of applications with respect to the posted wage.

We then use those elasticities as the dependent variable in two cross-sectional regressions. Since it is difficult to reliably estimate an elasticity for very small markets, we restrict the sample to CZ-SOC-6s with at least 50 observations. To account for the uncertainty around the elasticity estimate, observations are weighted by the inverse variance of the estimated elasticities. Finally, observations with elasticities above the ninety-ninth percentile and below the first percentile of the distribution are dropped from the sample.

In the first cross-sectional regression, we examine the relationship between the application elasticity estimated by the residualized regressions described above and the HHI computed from each firm's share of posted vacancies in the market defined by commuting zone,

TABLE 1—APPLICATION ELASTICITY REGRESSIONS

	Application elasticity			
	(1)	(2)	(3)	(4)
log population density	0.0649 (0.0628)		0.0162 (0.0641)	
log HHI		-0.219 (0.0659)	-0.215 (0.0679)	-0.218 (0.105)
CZ fixed effects				✓
Observations	500	500	500	474
R ²	0.002	0.022	0.022	0.350

Notes: Data are for the period 2010:I–2013:IV, aggregated by CZ-SOC-6. We restrict the sample to CZ-SOC-6s with at least 50 observations. Observations are weighted by the inverse variance of the estimated elasticities, and observations with elasticities above the ninety-ninth percentile and below the first percentile of the distribution are dropped from the sample. Standard errors in parentheses.

SOC-6 occupation, and quarter (averaged by commuting zone-by-SOC-6; see Azar et al. 2018 for a more in-depth discussion of this market definition). We verify that the elasticity increases with population density: the relationship is positive but not statistically significant (Table 1, column 1). As predicted by theory, a higher concentration of employers is negatively associated with the application elasticity (column 2). This suggests that concentration is a contributing factor to firm-level wage-setting power. The concentration-application elasticity relationship is unaffected when we include population density as an explanatory variable for the application elasticity (column 3). The relationship between the application elasticity and the HHI also holds across occupations within a commuting zone (column 4).

In the second cross-sectional regression, we regress observed market-level wages (again averaged by commuting zone-by-SOC-6) on estimated application elasticities and concentration by labor market. Table 2 shows that the application elasticity and concentration are each, separately, correlated with posted wages, with the expected signs. Furthermore, when entered together, the application elasticity and concentration both retain their significant effect on wages (column 3), with similar magnitudes. In column 4, we include commuting zone fixed effects, and the results are robust: this shows that the cross-sectional relationship between wages and the two measures of market power is

TABLE 2—WAGE REGRESSIONS

	log real wage			
	(1)	(2)	(3)	(4)
Application elasticity	0.103 (0.0112)		0.0996 (0.0113)	0.115 (0.0116)
log HHI		-0.0576 (0.0178)	-0.0358 (0.0167)	-0.0545 (0.0238)
CZ fixed effects				✓
Observations	500	500	500	500
R ²	0.146	0.021	0.154	0.555

Notes: Data are for the period 2010:I–2013:IV, aggregated by CZ-SOC-6. We restrict the sample to CZ-SOC-6s with at least 50 observations. Observations are weighted by the inverse variance of the estimated elasticities, and observations with elasticities above the ninety-ninth percentile and below the first percentile of the distribution are dropped from the sample. Standard errors in parentheses.

not driven by differential costs of living across geographies or other factors such as productivity that vary systematically across commuting zones.

III. Discussion and Conclusion

In this paper, we estimate the firm-level application elasticity from job-posting data, and we relate our estimates to labor market concentration. The results indicate that labor market concentration is negatively correlated with the application elasticity, and the application elasticity is close to zero in most markets but the most densely-populated. Wages are lower in markets where the application elasticity is lower or labor market concentration is higher, and this relationship persists when comparing occupations within a commuting zone. The results are consistent with the application elasticity and labor market concentration being two measures of labor market power.

Our results also suggest that while that power is likely to be pervasive in labor markets, it could respond to competition policy. This is in contrast to the idea that the power imbalance between employers and workers is such that anti-concentration policy would be powerless against it. The reality is more nuanced: employers do enjoy unilateral power to set wages, but that is reinforced by a lack of competition for labor in the markets where they hire. Therefore, antitrust and competition policy has the potential to increase

wages by policing anticompetitive conduct in the labor market, including issues like non-competition agreements and mergers (Marinescu and Hovenkamp 2018; Naidu, Posner, and Weyl 2018).

REFERENCES

- Azar, José, Ioana Marinescu, and Marshall I. Steinbaum.** 2017. "Labor Market Concentration." NBER Working Paper 24147.
- Azar, José A., Ioana Marinescu, Marshall I. Steinbaum, and Bledi Taska.** 2018. "Concentration in US Labor Markets: Evidence from Online Vacancy Data." NBER Working Paper 24395.
- Benmelech, Efraim, Nittai Bergman, and Hyunseob Kim.** 2018. "Strong Employers and Weak Employees: How Does Employer Concentration Affect Wages?" NBER Working Paper 24307.
- Boal, William M., and Michael R. Ransom.** 1997. "Monopsony in the Labor Market." *Journal of Economic Literature* 35 (1): 86–112.
- Card, David, Ana Rute Cardoso, Jörg Heining, and Patrick Kline.** 2016. "Firms and Labor Market Inequality: Evidence and Some Theory." NBER Working Paper 22850.
- Dube, Arindrajit, Jeff Jacobs, Suresh Naidu, and Siddharth Suri.** Forthcoming. "Monopsony in Online Labor Markets." *American Economic Review: Insights*.
- Hausman, Jerry, Gregory Leonard, and J. Douglas Zona.** 1994. "Competitive Analysis with Differentiated Products." *Annales d'Économie et de Statistique* 34: 159–80.
- Lipsius, Ben.** 2018. "Labor Market Concentration Does Not Explain the Falling Labor Share." https://papers.ssrn.com/sol3/papers.cfm?abstract_id=3279007 (accessed January 3, 2019).
- Manning, Alan.** 2011. "Imperfect Competition in the Labor Market." In *Handbook of Labor Economics*, Vol. 4 (B), edited by David Card and Orley Ashenfelter, 973–1041. Amsterdam: Elsevier.
- Marinescu, Ioana, and Herbert J. Hovenkamp.** 2018. "Anticompetitive Mergers in Labor Markets." *Faculty Scholarship at Penn Law*, February 20. https://scholarship.law.upenn.edu/cgi/viewcontent.cgi?article=2967&context=faculty_scholarship.
- Marinescu, Ioana, and Ronald Wolthoff.** 2016. "Opening the Black Box of the Matching Function: The Power of Words." NBER Working Paper 22508.
- Naidu, Suresh, Eric A. Posner, and Glen Weyl.** 2018. "Antitrust Remedies for Labor Market Power." *Harvard Law Review* 132 (2): 536–601.
- Rinz, Kevin.** 2018. "Labor Market Concentration, Earnings Inequality, and Earnings Mobility." Center for Administrative Records Research and Applications Working Paper 2018-10.
- US Department of Justice and Federal Trade Commission (FTC/DOJ).** 2010. *Horizontal Merger Guidelines*. Washington, DC: FTC/DOJ.
- Webber, Douglas A.** 2015. "Firm Market Power and the Earnings Distribution." *Labour Economics* 35 (C): 123–34.